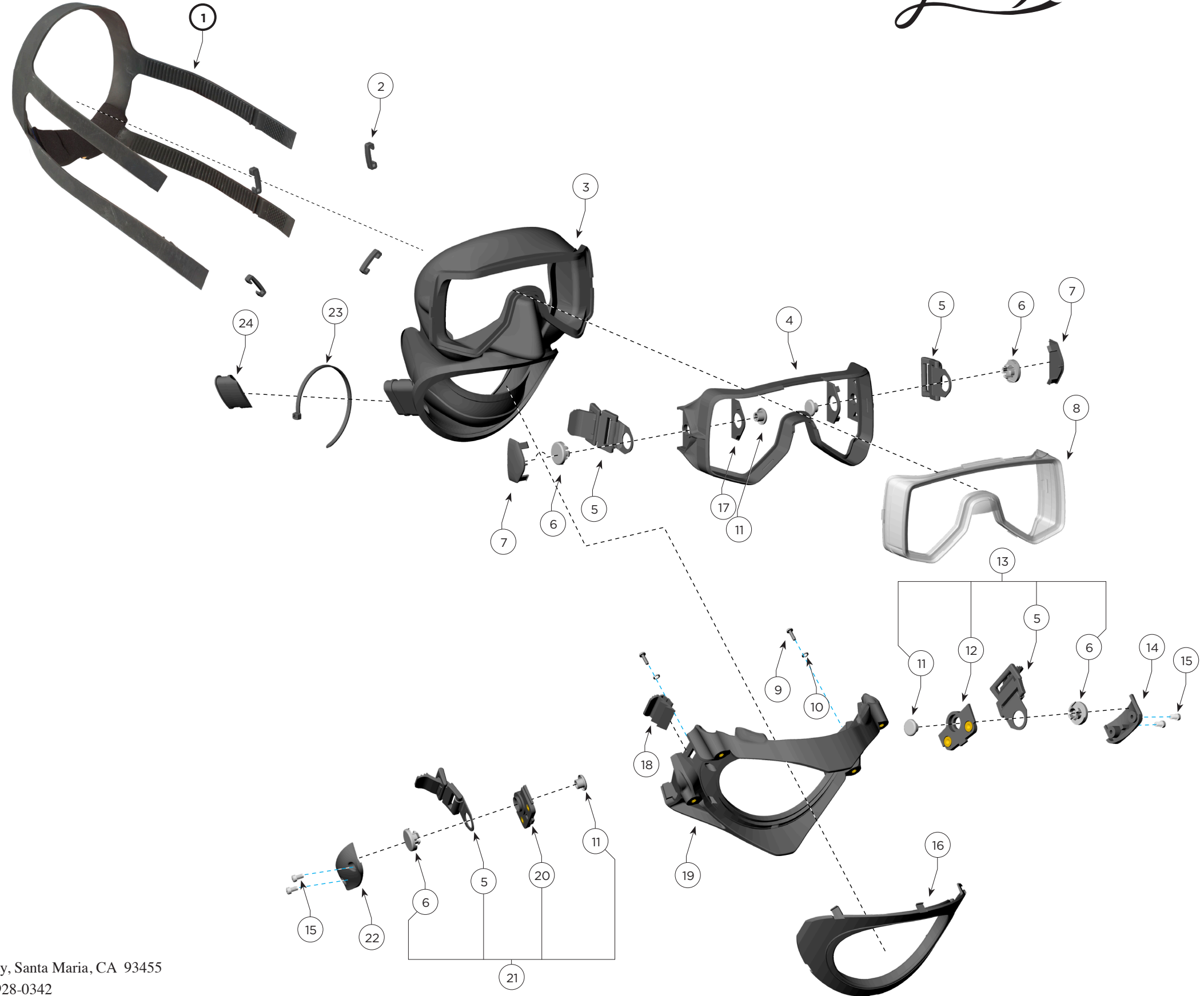


**805-010 SuperMask M-48,  
Black Sides**

**805-010C SuperMask M-48,  
Clear Sides**

Location #	Part #	Description
1	805-031	Harness, semi-stretch
2	820-225	Strap Keeper
3	810-005	Mask Skirt
4	820-050	Lens Retainer
5	805-028	Buckle Assembly, Non Mag
6	820-026	Buckle Tab Hold Plug
7	820-030	Buckle Cap
8	865-005	Lens
	865-005C	Lens, Clear
9	830-011	Screw
10	330-205	Washer
11	820-025	Lock Plug
12	820-227	Buckle Mount Plate, Left
13	805-153	Buckle Assembly, Non Mag, Left
14	820-233	Buckle Cap, Left
15	830-014	Screw
16	820-041	Jaw Frame Retainer
17	820-031	Buckle Cap Retainer
18	820-045	Pod Catch
19	820-036	Jaw Frame
20	820-226	Buckle Mount Plate, Right
21	805-152	Buckle Assembly, Non Mag, Right
22	820-232	Buckle Cap, Right
23	520-038	Tie Wrap
24	820-155	Comm port plug

**NOTE:** Although some components herein, are labeled, "Non-Mag", That claim is based on tests performed at initial production startup of this mask, and NOT based on any ongoing testing. If this product is to be used where the equipment needs to have a low, or non magnetic signature, it is the responsibility of the end user to apply any specialized testing, to determine if the equipment will pass any needed, low or non magnetic requirements.



Kirby Morgan Dive Systems, Inc.<sup>®</sup> 1430 Jason Way, Santa Maria, CA 93455

Phone: 805/928-7772 Fax: 805/928-0342

[www.KirbyMorgan.com](http://www.KirbyMorgan.com) e-mail: [kmdsi@KirbyMorgan.com](mailto:kmdsi@KirbyMorgan.com)